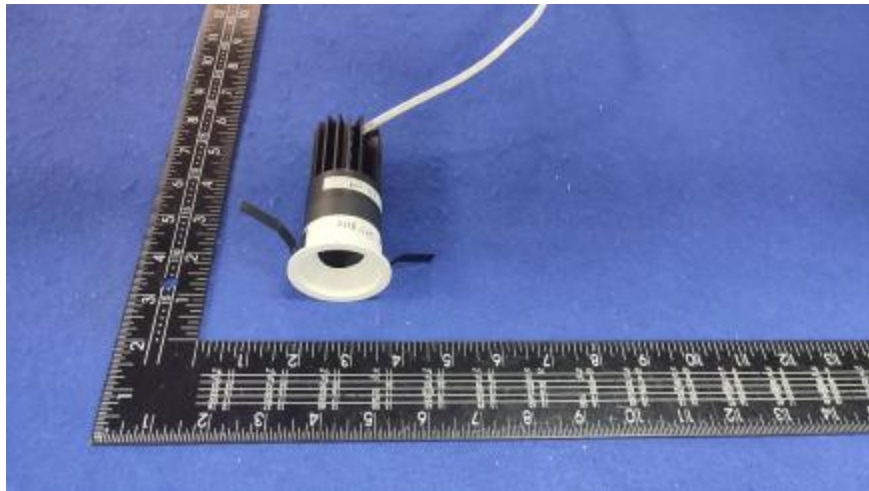


### Luminaire Photograph



Light Output Ratio:	58.5%	
Luminaire Power:	9.358 W	
SHR Nominal:	0.00	Calculated using the TM5
SHR Maximum:	0.30	fine grid method.

C Range: 0 - 360DEG  
C Interval: 30.0DEG  
Test Speed: HIGH  
Temperature: 25.3 °C  
Operators: Zoe  
Test Date: 2022-11-1

$\gamma$  Range: 0 - 180DEG  
 $\gamma$  Interval: 1.0DEG  
Test System: EVERFINE GO-SPEX500\_V1 SYSTEM V2.00.416  
Humidity: 65.0%  
Test Distance: 3.160m [K=1.0000]  
Remarks: LAMP: CMA1306-0000-000F0U0A30G Ra:90  
LENS: PM-1084 15R  
NO DRIVER: 500mA  
30minutes warm-up

## LUMINOUS INTENSITY DISTRIBUTION DIAGRAM

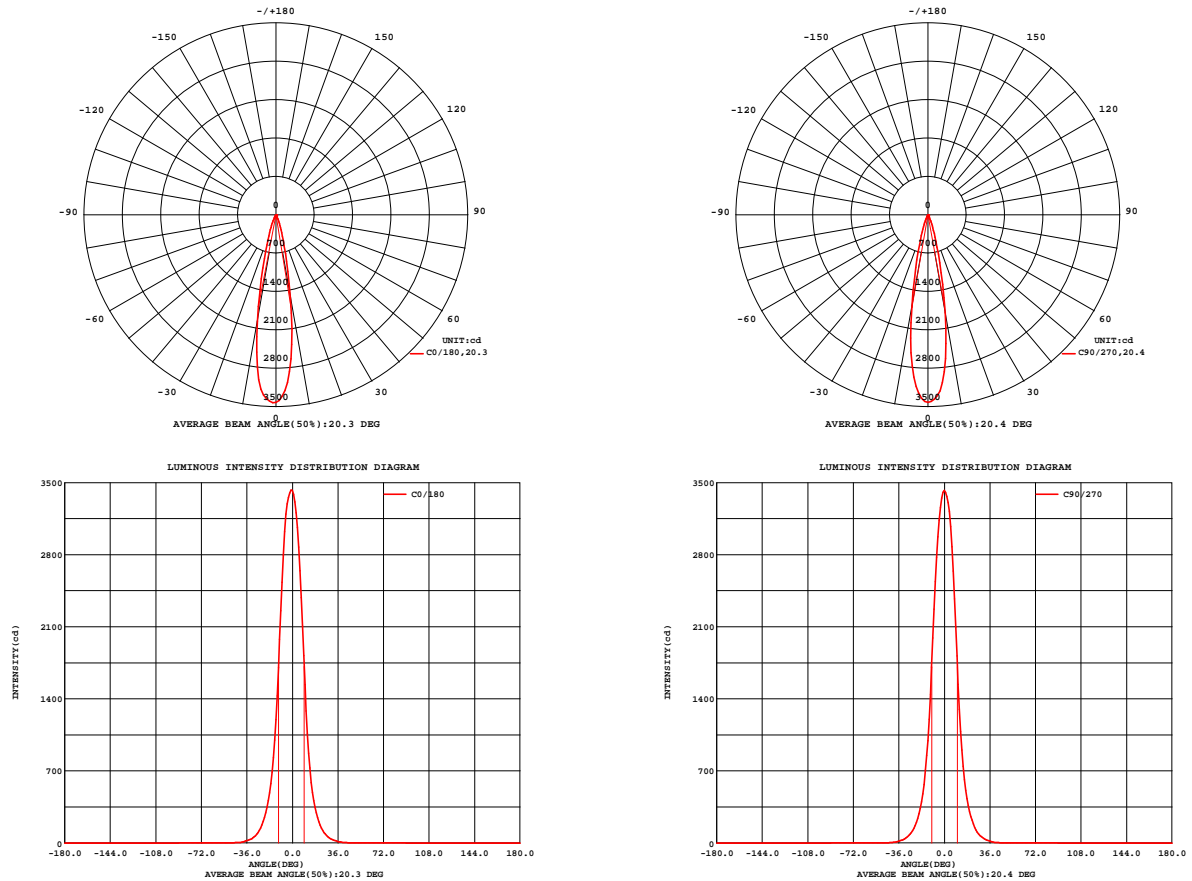


Fig. C0/C180

Fig. C90/C270

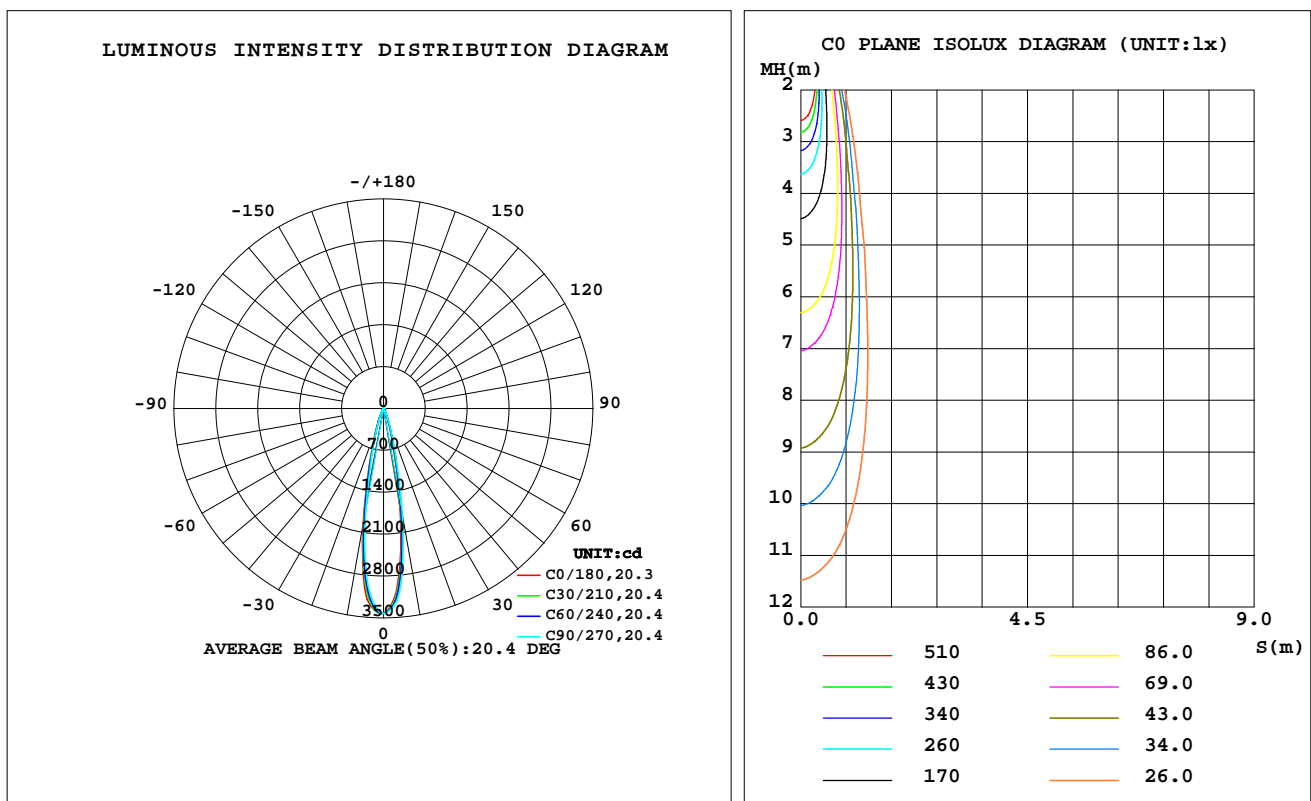
C Range: 0 - 360DEG  
C Interval: 30.0DEG  
Test Speed: HIGH  
Temperature: 25.3 °C  
Operators: Zoe  
Test Date: 2022-11-1

γ Range: 0 - 180DEG  
γ Interval: 1.0DEG  
Test System: EVERFINE GO-SPEX500\_V1 SYSTEM V2.00.416  
Humidity: 65.0%  
Test Distance: 3.160m [K=1.0000]  
Remarks: LAMP: CMA1306-0000-000F0U0A30G Ra: 90  
LENS: PM-1084 15R  
NO DRIVER: 500mA  
30minutes warm-up

## LUMINAIRE PHOTOMETRIC TEST REPORT

Test:U:18.724V I:0.4998A P:9.3583W PF:1.0000 Freq:59.98Hz Lamp Flux:919.82x1 lm		
NAME: 2118.565-LEA-09B	TYPE:	WEIGHT:
SPEC.: 3000K	DIM.:	SERIAL No.: 2211011094
MFR.: RISE	SUR.: 0.001256m2	Shielding Angle:

DATA OF LAMP		PHOTOMETRIC DATA Eff: 57.54 lm/W			
MODEL	CREE	I <sub>max</sub> (cd)	3427	S/MH(C0/180)	0.36
NOMINAL POWER(W)	9	LOR(%)	58.5	S/MH(C90/270)	0.34
RATED VOLTAGE(V)	18	TOTAL FLUX(lm)	538.47	η UP,DN(C0-180)	0.0,28.8
NOMINAL FLUX(lm)	919.82	CIE CLASS	DIRECT	η UP,DN(C180-360)	0.0,29.8
LAMPS INSIDE	1	η up(%)	0.0	CIBSE SHR NOM	0.00
TEST VOLTAGE(V)	18	η down(%)	58.5	CIBSE SHR MAX	0.30



C Range: 0 - 360DEG  
C Interval: 30.0DEG  
Test Speed: HIGH  
Temperature:25.3℃  
Operators:Zoe  
Test Date:2022-11-1

γ Range: 0 - 180DEG  
γ Interval: 1.0DEG  
Test System:EVERFINE GO-SPEX500\_V1 SYSTEM V2.00.416  
Humidity:65.0%  
Test Distance:3.160m [K=1.0000]  
Remarks: LAMP:CMA1306-0000-000F0U0A30G Ra:90  
LENS:PM-1084 15R  
NO DRIVER:500mA  
30minutes warm-up

## ZONAL FLUX DIAGRAM

### ZONAL FLUX DIAGRAM:

$\gamma$	C0	C45	C90	C135	C180	C225	C270	C315	$\gamma$	$\Phi$ zone	$\Phi$ total	%lum,lamp
10	1537	1659	1817	1837	1979	1873	1709	1656	0- 10	246.4	246.4	45.8,26.8
20	246.0	270.7	304.3	314.0	348.0	325.7	283.4	263.8	10- 20	211.3	457.7	85.4,49.8
30	43.00	47.53	53.07	54.31	59.84	56.84	50.52	46.38	20- 30	61.50	519.2	96.4,56.4
40	5.365	5.646	5.844	6.819	8.088	7.786	6.952	5.311	30- 40	14.78	534.0	99.2,58.1
50	1.598	1.520	1.534	1.599	1.869	1.666	1.514	1.504	40- 50	2.343	536.3	99.6,58.3
60	0.9680	0.7882	0.7654	0.7956	1.022	0.9854	1.022	0.9916	50- 60	1.060	537.4	99.8,58.4
70	0.3386	0.3219	0.3265	0.3482	0.4703	0.6769	0.8649	0.5920	60- 70	0.7536	538.1	99.9,58.5
80	0.1316	0.1195	0.1290	0.1276	0.1477	0.1422	0.1437	0.1316	70- 80	0.2566	538.4	100,58.5
90	0	0	0	0	0	0	0	0	80- 90	0.0662	538.5	100,58.5
100	0	0	0	0	0	0	0	0	90-100	0	538.5	100,58.5
110	0	0	0	0	0	0	0	0	100-110	0	538.5	100,58.5
120	0	0	0	0	0	0	0	0	110-120	0	538.5	100,58.5
130	0	0	0	0	0	0	0	0	120-130	0	538.5	100,58.5
140	0	0	0	0	0	0	0	0	130-140	0	538.5	100,58.5
150	0	0	0	0	0	0	0	0	140-150	0	538.5	100,58.5
160	0	0	0	0	0	0	0	0	150-160	0	538.5	100,58.5
170	0	0	0	0	0	0	0	0	160-170	0	538.5	100,58.5
180	0	0	0	0	0	0	0	0	170-180	0	538.5	100,58.5
DEG	LUMINOUS INTENSITY:cd									UNIT:lm		

C Range: 0 - 360DEG  
C Interval: 30.0DEG  
Test Speed: HIGH  
Temperature:25.3℃  
Operators:Zoe  
Test Date:2022-11-1

$\gamma$  Range: 0 - 180DEG  
 $\gamma$  Interval: 1.0DEG  
Test System:EVERFINE GO-SPEX500\_V1 SYSTEM V2.00.416  
Humidity:65.0%  
Test Distance:3.160m [K=1.0000]  
Remarks: LAMP:CMA1306-0000-000F0U0A30G Ra:90  
LENS:PM-1084 15R  
NO DRIVER:500mA  
30minutes warm-up

### LUMINANCE LIMITATION CURVES

Test:U:18.724V I:0.4998A P:9.3583W PF:1.0000 Freq:59.98Hz  
Lamp Flux:919.82x1 lm

NAME: 2118.565-LEA-09B

TYPE:

WEIGHT:

SPEC.: 3000K

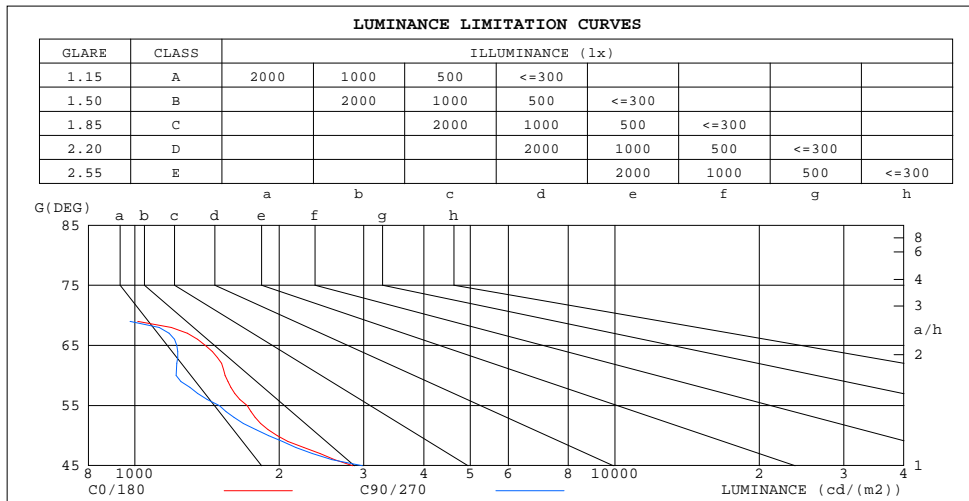
DIM.:

SERIAL No.: 2211011094

MFR.: RISE

SUR.: 0.001256m2

Shielding Angle:



LUMINANCE cd/(m2)		
G(180)	C0/180	C90/270
85	603	544
80	604	591
75	671	650
70	789	760
65	1401	1224
60	1542	1219
55	1714	1500
50	1980	1900
45	2845	2980

C Range: 0 - 360DEG  
C Interval: 30.0DEG  
Test Speed: HIGH  
Temperature:25.3℃  
Operators:Zoe  
Test Date:2022-11-1

γ Range: 0 - 180DEG  
γ Interval: 1.0DEG  
Test System:EVERFINE GO-SPEX500\_V1 SYSTEM V2.00.416  
Humidity:65.0%  
Test Distance:3.160m [K=1.0000]  
Remarks: LAMP:CMA1306-0000-000F0U0A30G Ra:90  
LENS:PM-1084 15R  
NO DRIVER:500mA  
30minutes warm-up

## CU AND LUMINAIRE BUDGETARY ESTIMATE DIAGRAM

Test:U:18.724V I:0.4998A P:9.3583W PF:1.0000 Freq:59.98Hz  
Lamp Flux:919.82x1 lm

NAME: 2118.565-LEA-09B

TYPE:

WEIGHT:

SPEC.: 3000K

DIM.:

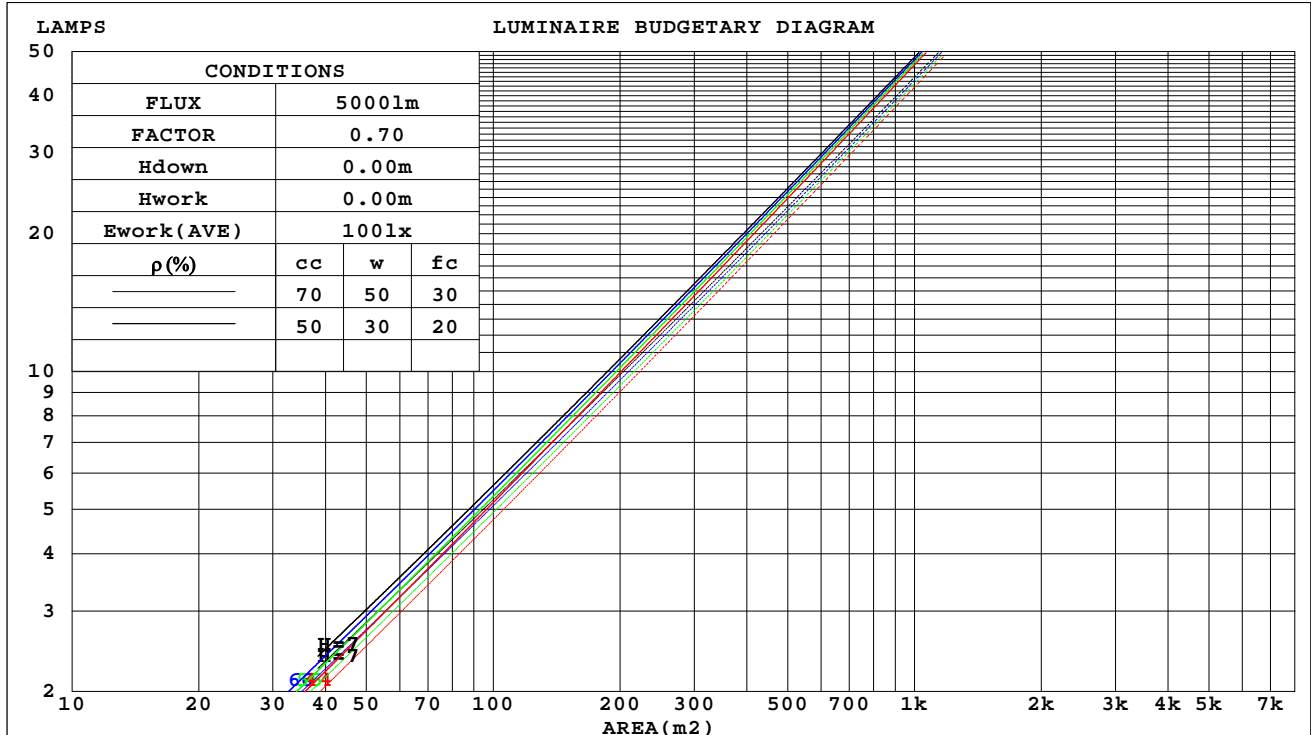
SERIAL No.: 2211011094

MFR.: RISE

SUR.: 0.001256m2

Shielding Angle:

$\rho_{cc}$	80%			70%			50%			30%			10%			0
$\rho_w$	50%	30%	10%	50%	30%	10%	50%	30%	10%	50%	30%	10%	50%	30%	10%	0
$\rho_{fc}$	20%			20%			20%			20%			20%			0
RCR	RCR:Room Cavity Ratio						Coefficients of Utilization(CU)									
0.0	.70	.70	.70	.68	.68	.68	.65	.65	.65	.62	.62	.62	.60	.60	.60	.59
1.0	.66	.65	.64	.65	.64	.63	.63	.62	.61	.61	.60	.60	.59	.58	.58	.57
2.0	.64	.62	.61	.63	.61	.60	.61	.60	.59	.59	.58	.57	.58	.57	.56	.55
3.0	.61	.59	.58	.60	.59	.57	.59	.57	.56	.58	.56	.55	.56	.55	.55	.54
4.0	.59	.57	.55	.58	.56	.55	.57	.56	.54	.56	.55	.54	.55	.54	.53	.53
5.0	.57	.55	.53	.57	.55	.53	.56	.54	.53	.55	.53	.52	.54	.53	.52	.51
6.0	.55	.53	.52	.55	.53	.52	.54	.53	.51	.54	.52	.51	.53	.52	.51	.50
7.0	.54	.52	.50	.54	.52	.50	.53	.51	.50	.52	.51	.50	.52	.50	.49	.49
8.0	.53	.50	.49	.52	.50	.49	.52	.50	.49	.51	.50	.48	.51	.49	.48	.48
9.0	.51	.49	.48	.51	.49	.48	.51	.49	.48	.50	.49	.47	.50	.48	.47	.47
10.0	.50	.48	.47	.50	.48	.47	.50	.48	.47	.49	.48	.46	.49	.47	.46	.46



C Range: 0 - 360DEG  
C Interval: 30.0DEG  
Test Speed: HIGH  
Temperature:25.3 °C  
Operators:Zoe  
Test Date:2022-11-1

$\gamma$  Range: 0 - 180DEG  
 $\gamma$  Interval: 1.0DEG  
Test System:EVERFINE GO-SPEX500\_V1 SYSTEM V2.00.416  
Humidity:65.0%  
Test Distance:3.160m [K=1.0000]  
Remarks: LAMP:CMA1306-0000-000F0U0A30G Ra:90  
LENS:PM-1084 15R  
NO DRIVER:500mA  
30minutes warm-up

### WEC AND CCEC

Test:U:18.724V I:0.4998A P:9.3583W PF:1.0000 Freq:59.98Hz Lamp Flux:919.82x1 lm		
NAME: 2118.565-LEA-09B	TYPE:	WEIGHT:
SPEC.: 3000K	DIM.:	SERIAL No.: 2211011094
MFR.: RISE	SUR.: 0.001256m2	Shielding Angle:

pcc	80%			70%			50%			30%			10%			0
ρw	50%	30%	10%	50%	30%	10%	50%	30%	10%	50%	30%	10%	50%	30%	10%	0
ρfc	20%			20%			20%			20%			20%			0
RCR	RCR:Room Cavity Ratio						Wall Exitance Coefficients(WEC)									
0.0																
1.0	.075	.043	.014	.071	.041	.013	.064	.037	.012	.058	.033	.011	.051	.030	.010	
2.0	.069	.038	.012	.066	.036	.011	.060	.033	.010	.055	.031	.010	.050	.028	.009	
3.0	.064	.034	.010	.061	.033	.010	.057	.031	.009	.052	.029	.009	.048	.026	.008	
4.0	.060	.031	.009	.058	.030	.009	.053	.028	.008	.050	.027	.008	.046	.025	.008	
5.0	.056	.029	.008	.054	.028	.008	.051	.026	.008	.047	.025	.007	.044	.024	.007	
6.0	.053	.026	.008	.051	.026	.007	.048	.025	.007	.045	.024	.007	.043	.023	.007	
7.0	.050	.025	.007	.049	.024	.007	.046	.023	.007	.044	.022	.007	.041	.021	.006	
8.0	.047	.023	.007	.046	.023	.006	.044	.022	.006	.042	.021	.006	.040	.020	.006	
9.0	.045	.022	.006	.044	.022	.006	.042	.021	.006	.040	.020	.006	.039	.020	.006	
10.0	.043	.021	.006	.042	.020	.006	.041	.020	.006	.039	.019	.005	.037	.019	.005	

pcc	80%			70%			50%			30%			10%			0
pw	50%	30%	10%	50%	30%	10%	50%	30%	10%	50%	30%	10%	50%	30%	10%	0
pfc	20%			20%			20%			20%			20%			0
RCR	RCR:Room Cavity Ratio						Ceiling Cavity Exitance Coefficients(CCEC)									
0.0	.112	.112	.112	.095	.095	.095	.065	.065	.065	.037	.037	.037	.012	.012	.012	
1.0	.098	.092	.087	.084	.079	.075	.057	.055	.052	.033	.032	.030	.011	.010	.010	
2.0	.087	.078	.070	.075	.067	.060	.051	.046	.042	.030	.027	.025	.009	.009	.008	
3.0	.078	.066	.057	.067	.057	.049	.046	.040	.035	.027	.023	.020	.009	.008	.007	
4.0	.071	.057	.047	.061	.049	.041	.042	.034	.029	.024	.020	.017	.008	.007	.006	
5.0	.064	.050	.039	.055	.043	.034	.038	.030	.024	.022	.018	.014	.007	.006	.005	
6.0	.059	.044	.033	.051	.038	.029	.035	.027	.021	.020	.016	.012	.007	.005	.004	
7.0	.054	.039	.029	.047	.034	.025	.032	.024	.018	.019	.014	.010	.006	.005	.003	
8.0	.050	.035	.025	.043	.030	.021	.030	.021	.015	.017	.013	.009	.006	.004	.003	
9.0	.047	.032	.021	.040	.027	.019	.028	.019	.013	.016	.011	.008	.005	.004	.003	
10.0	.044	.029	.019	.038	.025	.016	.026	.018	.012	.015	.010	.007	.005	.003	.002	

C Range: 0 - 360DEG  
C Interval: 30.0DEG  
Test Speed: HIGH  
Temperature:25.3℃  
Operators:Zoe  
Test Date:2022-11-1

γ Range: 0 - 180DEG  
γ Interval: 1.0DEG  
Test System:EVERFINE GO-SPEX500\_V1 SYSTEM V2.00.416  
Humidity:65.0%  
Test Distance:3.160m [K=1.0000]  
Remarks: LAMP:CMA1306-0000-000F0U0A30G Ra:90  
LENS:PM-1084 15R  
NO DRIVER:500mA  
30minutes warm-up

## UGR(Unified Glare Rating) Table

Test:U:18.724V I:0.4998A P:9.3583W PF:1.0000 Freq:59.98Hz Lamp Flux:919.82x1 lm										
NAME: 2118.565-LEA-09B					TYPE:			WEIGHT:		
SPEC.: 3000K					DIM.:			SERIAL No.: 2211011094		
MFR.: RISE					SUR.: 0.001256m2			Shielding Angle:		
ceiling/cavity	0.7	0.7	0.5	0.5	0.3	0.7	0.7	0.5	0.5	0.3
walls	0.5	0.3	0.5	0.3	0.3	0.5	0.3	0.5	0.3	0.3
working plane	0.2	0.2	0.2	0.2	0.2	0.2	0.2	0.2	0.2	0.2
Room dimensions	Viewed crosswise					Viewed endwise				
x = 2H y = 2H	6.7	7.3	6.9	7.5	7.6	7.4	8.0	7.6	8.1	8.3
3H	6.8	7.3	7.0	7.5	7.7	7.4	7.9	7.6	8.1	8.3
4H	6.7	7.2	7.0	7.4	7.7	7.3	7.8	7.6	8.0	8.3
6H	6.7	7.2	6.9	7.4	7.6	7.3	7.8	7.5	8.0	8.2
8H	6.6	7.1	6.9	7.4	7.6	7.2	7.7	7.5	8.0	8.2
12H	6.6	7.1	6.9	7.3	7.6	7.2	7.7	7.5	7.9	8.2
4H 2H	6.6	7.1	6.9	7.3	7.5	7.2	7.8	7.5	8.0	8.2
3H	6.6	7.1	6.9	7.4	7.6	7.2	7.7	7.5	7.9	8.2
4H	6.6	7.0	6.9	7.3	7.6	7.2	7.6	7.5	7.9	8.2
6H	6.5	6.9	6.9	7.3	7.6	7.1	7.5	7.5	7.8	8.2
8H	6.5	6.9	6.9	7.2	7.6	7.1	7.4	7.5	7.8	8.1
12H	6.5	6.8	6.9	7.2	7.6	7.0	7.4	7.4	7.7	8.1
8H 4H	6.5	6.8	6.9	7.2	7.5	7.0	7.4	7.4	7.7	8.1
6H	6.4	6.7	6.8	7.1	7.5	7.0	7.3	7.4	7.7	8.1
8H	6.4	6.7	6.8	7.1	7.5	7.0	7.2	7.4	7.6	8.1
12H	6.4	6.6	6.8	7.0	7.5	6.9	7.1	7.4	7.6	8.1
12H 4H	6.4	6.7	6.8	7.1	7.5	7.0	7.3	7.4	7.7	8.1
6H	6.4	6.6	6.8	7.1	7.5	6.9	7.2	7.4	7.6	8.0
8H	6.3	6.6	6.8	7.0	7.5	6.9	7.1	7.4	7.6	8.0
Variations with the observer position at spacings(CIE Pub.117):										
S = 1.0H	+ 3.1 / - 3.5					+ 4.0 / - 4.4				
1.5H	+ 5.2 / - 3.2					+ 6.2 / - 4.0				
2.0H	+ 1.9 / - 1.1					+ 2.4 / - 1.2				

CIE Pub.117, 919.8 lm Total Lamp Luminous Flux Correct (8log(F/F0) = -0.3)  
Area: 0.001256 m2

C Range: 0 - 360DEG  
C Interval: 30.0DEG  
Test Speed: HIGH  
Temperature:25.3℃  
Operators:Zoe  
Test Date:2022-11-1

γ Range: 0 - 180DEG  
γ Interval: 1.0DEG  
Test System:EVERFINE GO-SPEX500\_V1 SYSTEM V2.00.416  
Humidity:65.0%  
Test Distance:3.160m [K=1.0000]  
Remarks: LAMP:CMA1306-0000-000F0U0A30G Ra:90  
LENS:PM-1084 15R  
NO DRIVER:500mA  
30minutes warm-up

### UTILIZATION FACTORS TABLE

Test:U:18.724V I:0.4998A P:9.3583W PF:1.0000 Freq:59.98Hz Lamp Flux:919.82x1 lm		
NAME: 2118.565-LEA-09B	TYPE:	WEIGHT:
SPEC.: 3000K	DIM.:	SERIAL No.: 2211011094
MFR.: RISE	SUR.: 0.001256m2	Shielding Angle:

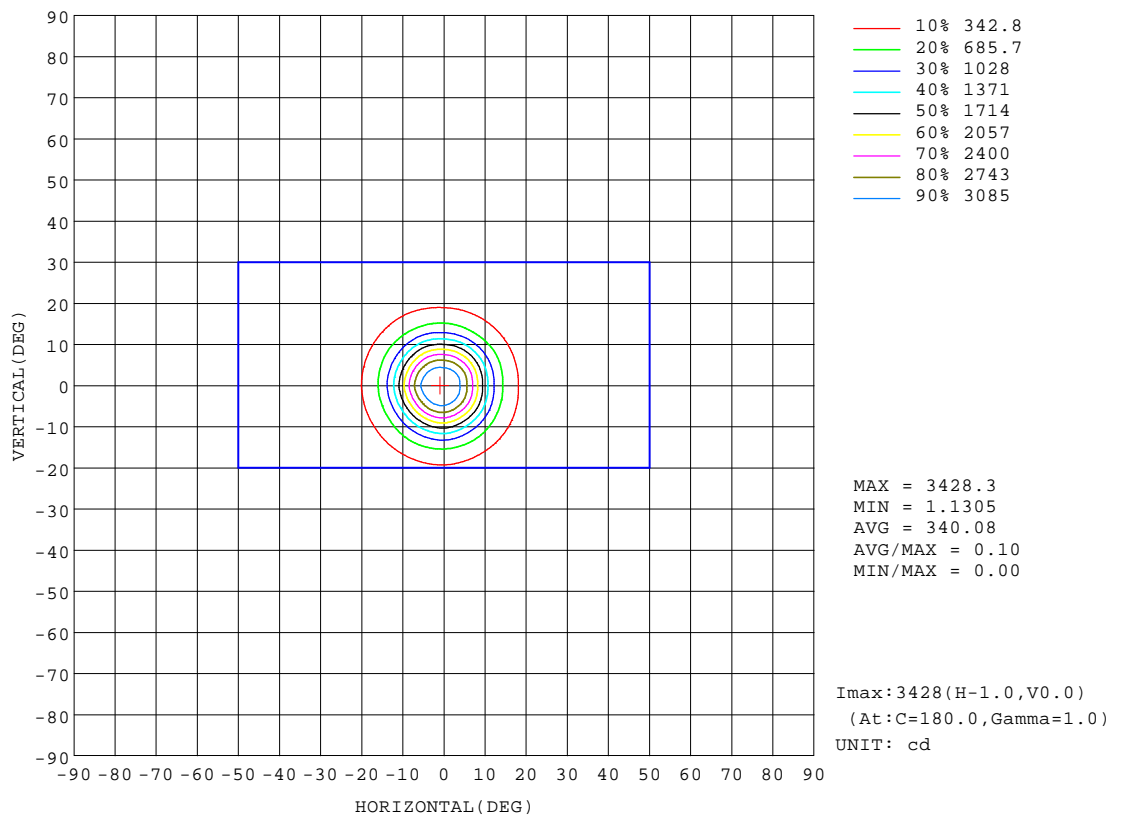
REFLECTANCE										
Ceiling	0.8	0.8	0.8	0.7	0.7	0.7	0.5	0.5	0.5	0
Walls	0.7	0.5	0.3	0.7	0.5	0.3	0.7	0.5	0.3	0
Working plane	0.2	0.2	0.2	0.2	0.2	0.2	0.2	0.2	0.2	0
ROOM INDEX	UTILIZATION FACTORS(PERCENT) $k(RI) \times RCR = 5$									
k = 0.60	53	50	48	53	50	48	53	50	48	46
0.80	57	54	52	57	54	52	56	54	52	50
1.00	60	57	55	59	56	55	58	56	54	52
1.25	62	59	57	61	59	57	60	58	56	54
1.50	63	61	59	62	60	59	61	59	58	55
2.00	64	62	60	63	61	60	62	60	59	56
2.50	65	63	62	64	62	61	62	61	60	57
3.00	66	64	63	65	63	62	63	62	61	57
4.00	67	66	64	66	65	64	64	63	62	58
5.00	68	67	66	67	66	65	64	64	63	59
ROOM INDEX	UF(total)									Direct
According to DIN EN 13032-2 2004			Suspended					SHRNOM = 1.25		

C Range: 0 - 360DEG  
C Interval: 30.0DEG  
Test Speed: HIGH  
Temperature:25.3℃  
Operators:Zoe  
Test Date:2022-11-1

γ Range: 0 - 180DEG  
γ Interval: 1.0DEG  
Test System:EVERFINE GO-SPEX500\_V1 SYSTEM V2.00.416  
Humidity:65.0%  
Test Distance:3.160m [K=1.0000]  
Remarks: LAMP:CMA1306-0000-000F0U0A30G Ra:90  
LENS:PM-1084 15R  
NO DRIVER:500mA  
30minutes warm-up

## ISOCANDELA DIAGRAM

Test:U:18.724V I:0.4998A P:9.3583W PF:1.0000 Freq:59.98Hz Lamp Flux:919.82x1 lm		
NAME: 2118.565-LEA-09B	TYPE:	WEIGHT:
SPEC.: 3000K	DIM.:	SERIAL No.: 2211011094
MFR.: RISE	SUR.: 0.001256m2	Shielding Angle:

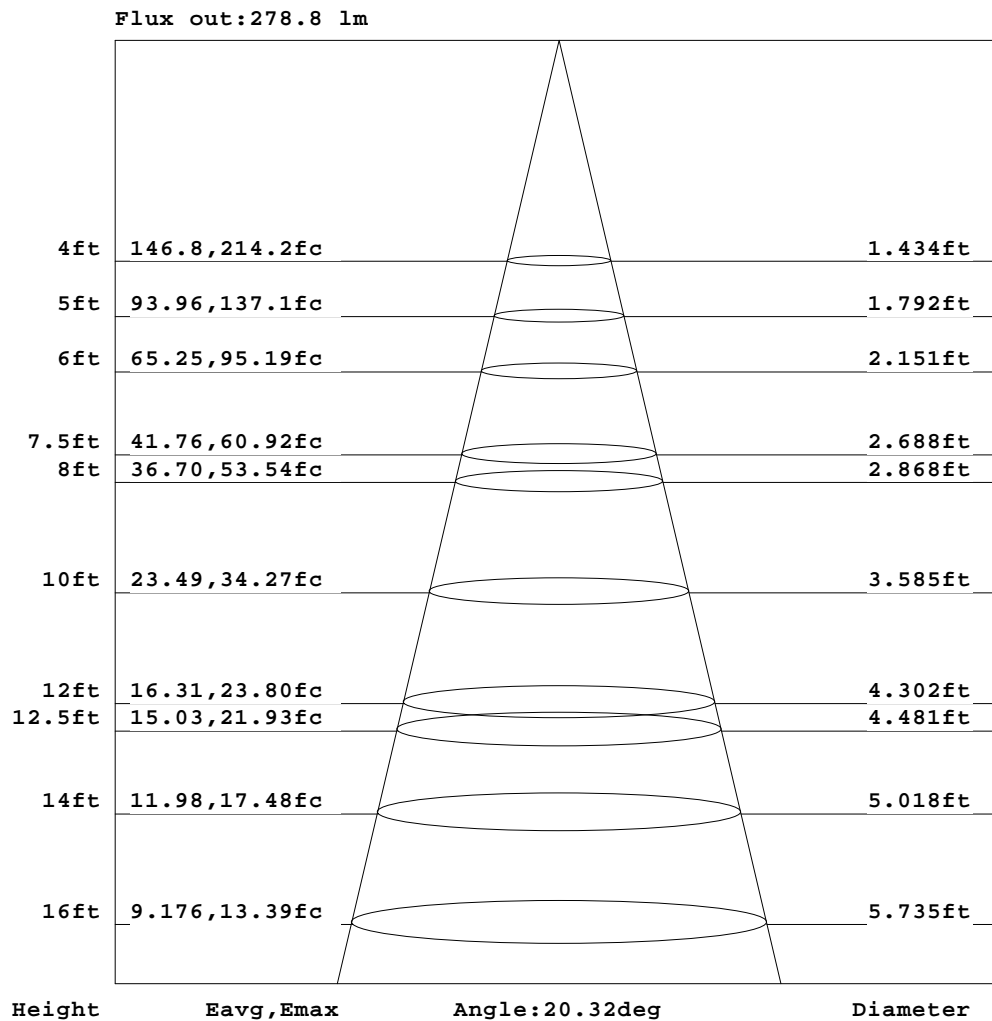


C Range: 0 - 360DEG  
C Interval: 30.0DEG  
Test Speed: HIGH  
Temperature: 25.3 °C  
Operators: Zoe  
Test Date: 2022-11-1

γ Range: 0 - 180DEG  
γ Interval: 1.0DEG  
Test System: EVERFINE GO-SPEX500\_V1 SYSTEM V2.00.416  
Humidity: 65.0%  
Test Distance: 3.160m [K=1.0000]  
Remarks: LAMP: CMA1306-0000-000F0U0A30G Ra: 90  
LENS: PM-1084 15R  
NO DRIVER: 500mA  
30minutes warm-up

## AAI Figure

Test:U:18.724V I:0.4998A P:9.3583W PF:1.0000 Freq:59.98Hz Lamp Flux:919.82x1 lm		
NAME: 2118.565-LEA-09B	TYPE:	WEIGHT:
SPEC.: 3000K	DIM.:	SERIAL No.: 2211011094
MFR.: RISE	SUR.: 0.001256m2	Shielding Angle:



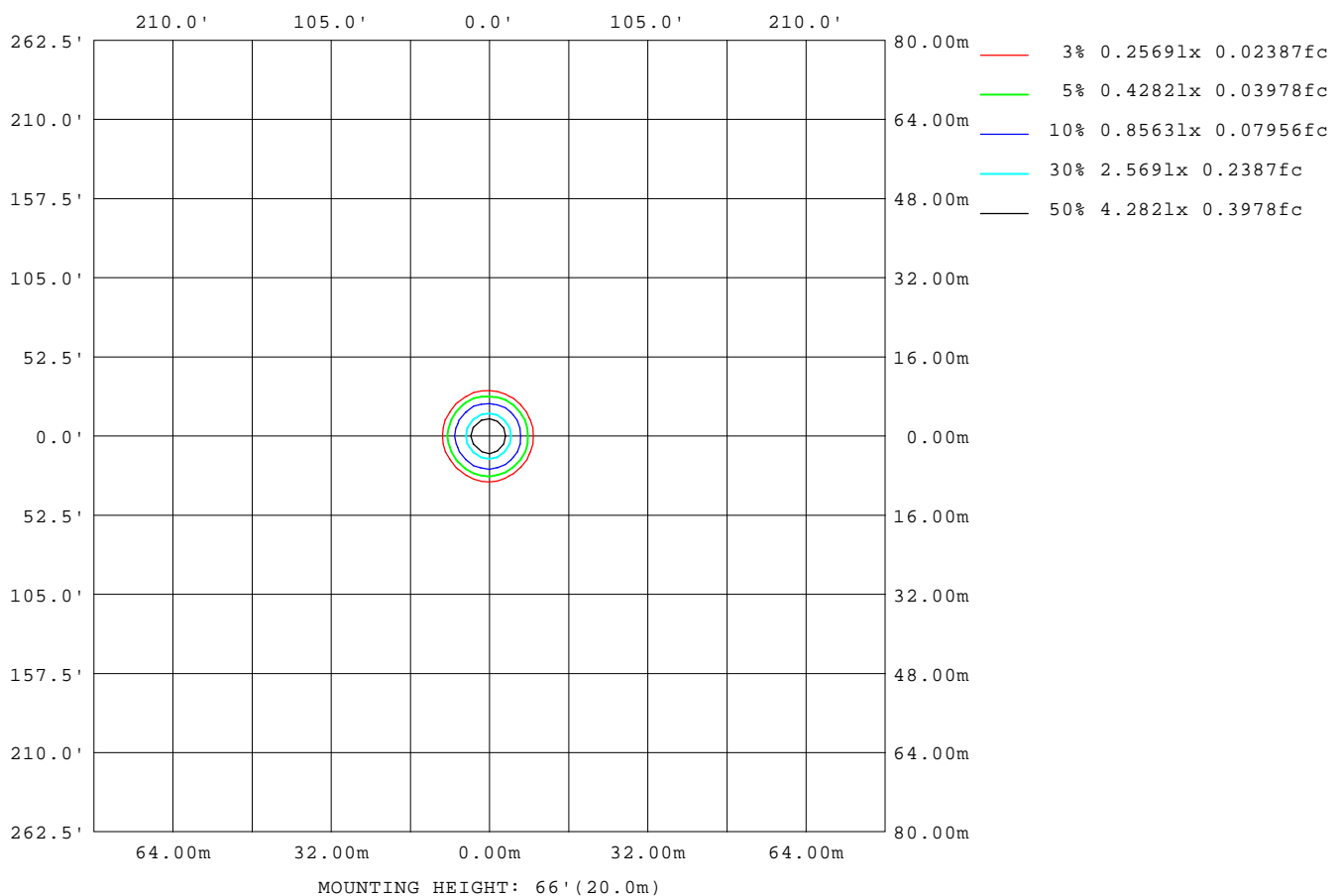
Note: The Curves indicate the illuminated area and the average illumination when the luminaire is at different distance.

C Range: 0 - 360DEG  
C Interval: 30.0DEG  
Test Speed: HIGH  
Temperature: 25.3°C  
Operators: Zoe  
Test Date: 2022-11-1

γ Range: 0 - 180DEG  
γ Interval: 1.0DEG  
Test System: EVERFINE GO-SPEX500\_V1 SYSTEM V2.00.416  
Humidity: 65.0%  
Test Distance: 3.160m [K=1.0000]  
Remarks: LAMP: CMA1306-0000-000F0U0A30G Ra: 90  
LENS: PM-1084 15R  
NO DRIVER: 500mA  
30minutes warm-up

## ISOLUX DIAGRAM

Test:U:18.724V I:0.4998A P:9.3583W PF:1.0000 Freq:59.98Hz Lamp Flux:919.82x1 lm		
NAME: 2118.565-LEA-09B	TYPE:	WEIGHT:
SPEC.: 3000K	DIM.:	SERIAL No.: 2211011094
MFR.: RISE	SUR.: 0.001256m2	Shielding Angle:



C Range: 0 - 360DEG  
C Interval: 30.0DEG  
Test Speed: HIGH  
Temperature:25.3 °C  
Operators:Zoe  
Test Date:2022-11-1

γ Range: 0 - 180DEG  
γ Interval: 1.0DEG  
Test System:EVERFINE GO-SPEX500\_V1 SYSTEM V2.00.416  
Humidity:65.0%  
Test Distance:3.160m [K=1.0000]  
Remarks: LAMP:CMA1306-0000-000F0U0A30G Ra:90  
LENS:PM-1084 15R  
NO DRIVER:500mA  
30minutes warm-up

## LED Avg.L Report

Test:U:18.724V I:0.4998A P:9.3583W PF:1.0000 Freq:59.98Hz Lamp Flux:919.82x1 lm		
NAME: 2118.565-LEA-09B	TYPE:	WEIGHT:
SPEC.: 3000K	DIM.:	SERIAL No.: 2211011094
MFR.: RISE	SUR.: 0.001256m2	Shielding Angle:

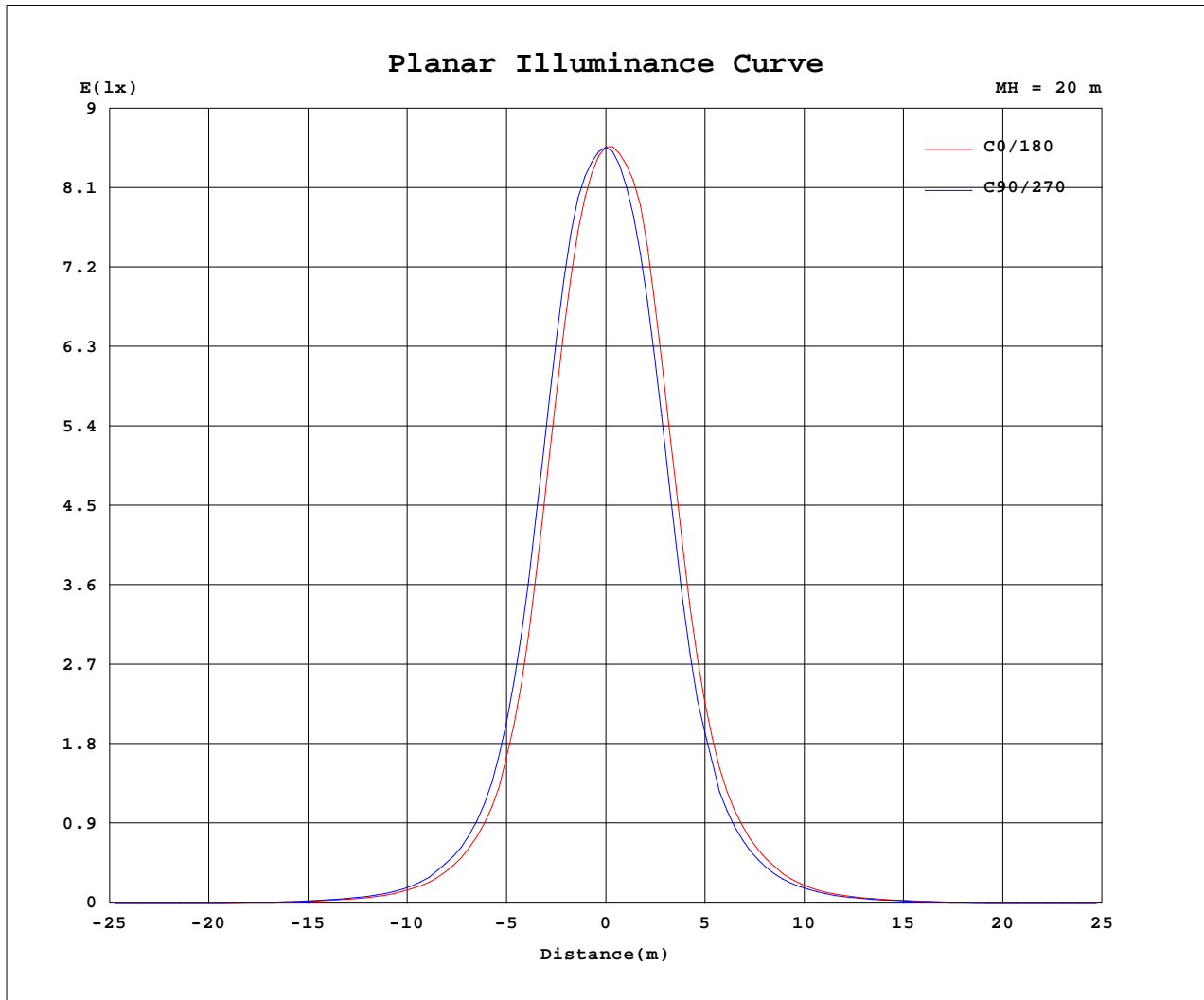
AvgL	cd/m2
L_0~180(65)av	1442
L_0~180(75)av	702
L_0~180(85)av	676
L_90~270(65)av	1543
L_90~270(75)av	681
L_90~270(85)av	534
L_45(65)av	1473
L_45(75)av	674
L_45(85)av	508

Standard: GB/T 29293-2012

C Range: 0 - 360DEG  
C Interval: 30.0DEG  
Test Speed: HIGH  
Temperature:25.3℃  
Operators:Zoe  
Test Date:2022-11-1

γ Range: 0 - 180DEG  
γ Interval: 1.0DEG  
Test System:EVERFINE GO-SPEX500\_V1 SYSTEM V2.00.416  
Humidity:65.0%  
Test Distance:3.160m [K=1.0000]  
Remarks: LAMP:CMA1306-0000-000F0U0A30G Ra:90  
LENS:PM-1084 15R  
NO DRIVER:500mA  
30minutes warm-up

## Planar Illuminance Curve



C Range: 0 - 360DEG  
 C Interval: 30.0DEG  
 Test Speed: HIGH  
 Temperature: 25.3 °C  
 Operators: Zoe  
 Test Date: 2022-11-1

γ Range: 0 - 180DEG  
 γ Interval: 1.0DEG  
 Test System: EVERFINE GO-SPEX500\_V1 SYSTEM V2.00.416  
 Humidity: 65.0%  
 Test Distance: 3.160m [K=1.0000]  
 Remarks: LAMP: CMA1306-0000-000F0U0A30G Ra:90  
 LENS: PM-1084 15R  
 NO DRIVER: 500mA  
 30minutes warm-up

## LUMINOUS DISTRIBUTION INTENSITY DATA

Test:U:18.724V I:0.4998A P:9.3583W PF:1.0000 Freq:59.98Hz Lamp Flux:919.82x1 lm		
NAME: 2118.565-LEA-09B	TYPE:	WEIGHT:
SPEC.: 3000K	DIM.:	SERIAL No.: 2211011094
MFR.: RISE	SUR.: 0.001256m2	Shielding Angle:

Table--1

UNIT: cd

C(DEG) γ (DEG)	0	30	60	90	120	150	180	210	240	270	300	330						
0	3424	3424	3424	3424	3424	3424	3424	3424	3424	3424	3424	3424						
5	2872	2941	2996	3073	3105	3131	3195	3121	3058	2974	2949	2936						
10	1537	1632	1686	1817	1816	1858	1979	1900	1846	1709	1682	1631						
15	584	633	699	744	773	764	829	822	754	708	647	651						
20	246	265	276	304	308	320	348	334	317	283	270	258						
25	102	109	113	126	129	134	146	140	133	119	114	108						
30	43.0	46.4	48.7	53.1	53.3	55.3	59.8	58.1	55.5	50.5	47.8	44.9						
35	19.1	20.7	21.5	23.3	23.6	24.8	26.8	25.8	24.4	21.9	20.7	19.3						
40	5.37	5.65	5.64	5.84	6.96	6.68	8.09	8.59	6.98	6.95	5.38	5.24						
45	2.53	2.51	2.55	2.65	2.66	2.90	3.24	2.98	2.83	2.59	2.48	2.50						
50	1.60	1.55	1.49	1.53	1.54	1.66	1.87	1.69	1.64	1.51	1.49	1.52						
55	1.23	1.14	1.06	1.08	1.08	1.16	1.33	1.22	1.20	1.19	1.19	1.18						
60	0.97	0.81	0.77	0.77	0.77	0.82	1.02	0.96	1.01	1.02	1.02	0.97						
65	0.74	0.66	0.64	0.65	0.66	0.67	0.79	0.85	0.95	0.99	0.98	0.86						
70	0.34	0.32	0.32	0.33	0.33	0.36	0.47	0.54	0.81	0.86	0.79	0.39						
75	0.22	0.21	0.20	0.21	0.21	0.22	0.24	0.24	0.23	0.23	0.22	0.22						
80	0.13	0.12	0.12	0.13	0.13	0.13	0.15	0.14	0.14	0.14	0.13	0.13						
85	0.07	0.05	0.05	0.06	0.06	0.06	0.08	0.07	0.06	0.06	0.05	0.06						
90	0.00	0.00	0.00	0.00	0.00	0.00	0.00	0.00	0.00	0.00	0.00	0.00						
95	0.00	0.00	0.00	0.00	0.00	0.00	0.00	0.00	0.00	0.00	0.00	0.00						
100	0.00	0.00	0.00	0.00	0.00	0.00	0.00	0.00	0.00	0.00	0.00	0.00						
105	0.00	0.00	0.00	0.00	0.00	0.00	0.00	0.00	0.00	0.00	0.00	0.00						
110	0.00	0.00	0.00	0.00	0.00	0.00	0.00	0.00	0.00	0.00	0.00	0.00						
115	0.00	0.00	0.00	0.00	0.00	0.00	0.00	0.00	0.00	0.00	0.00	0.00						
120	0.00	0.00	0.00	0.00	0.00	0.00	0.00	0.00	0.00	0.00	0.00	0.00						
125	0.00	0.00	0.00	0.00	0.00	0.00	0.00	0.00	0.00	0.00	0.00	0.00						
130	0.00	0.00	0.00	0.00	0.00	0.00	0.00	0.00	0.00	0.00	0.00	0.00						
135	0.00	0.00	0.00	0.00	0.00	0.00	0.00	0.00	0.00	0.00	0.00	0.00						
140	0.00	0.00	0.00	0.00	0.00	0.00	0.00	0.00	0.00	0.00	0.00	0.00						
145	0.00	0.00	0.00	0.00	0.00	0.00	0.00	0.00	0.00	0.00	0.00	0.00						
150	0.00	0.00	0.00	0.00	0.00	0.00	0.00	0.00	0.00	0.00	0.00	0.00						
155	0.00	0.00	0.00	0.00	0.00	0.00	0.00	0.00	0.00	0.00	0.00	0.00						
160	0.00	0.00	0.00	0.00	0.00	0.00	0.00	0.00	0.00	0.00	0.00	0.00						
165	0.00	0.00	0.00	0.00	0.00	0.00	0.00	0.00	0.00	0.00	0.00	0.00						
170	0.00	0.00	0.00	0.00	0.00	0.00	0.00	0.00	0.00	0.00	0.00	0.00						
175	0.00	0.00	0.00	0.00	0.00	0.00	0.00	0.00	0.00	0.00	0.00	0.00						
180	0.00	0.00	0.00	0.00	0.00	0.00	0.00	0.00	0.00	0.00	0.00	0.00						

C Range: 0 - 360DEG  
C Interval: 30.0DEG  
Test Speed: HIGH  
Temperature:25.3℃  
Operators:Zoe  
Test Date:2022-11-1

γ Range: 0 - 180DEG  
γ Interval: 1.0DEG  
Test System:EVERFINE GO-SPEX500\_V1 SYSTEM V2.00.416  
Humidity:65.0%  
Test Distance:3.160m [K=1.0000]  
Remarks: LAMP:CMA1306-0000-000F0U0A30G Ra:90  
LENS:PM-1084 15R  
NO DRIVER:500mA  
30minutes warm-up